



GE HealthCare

Voluson Expert

You Set the Limits

2022

Voluson™

A Healthier Future for Women





You Set the Limits

You set out to make a difference. You became a leader.
Medicine is who you are. Women's Health—your life, your legacy.

Your eye is focused on 'right now', but you are envisioning 'what's next',
finding answers to questions that have yet to be asked.
And the more you know, the more you want to know.

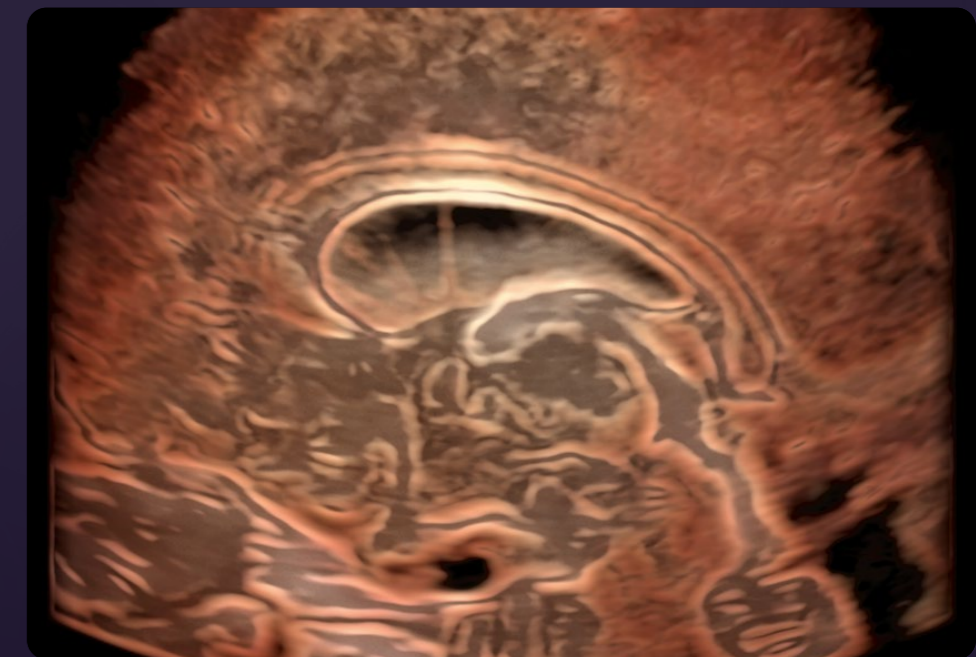
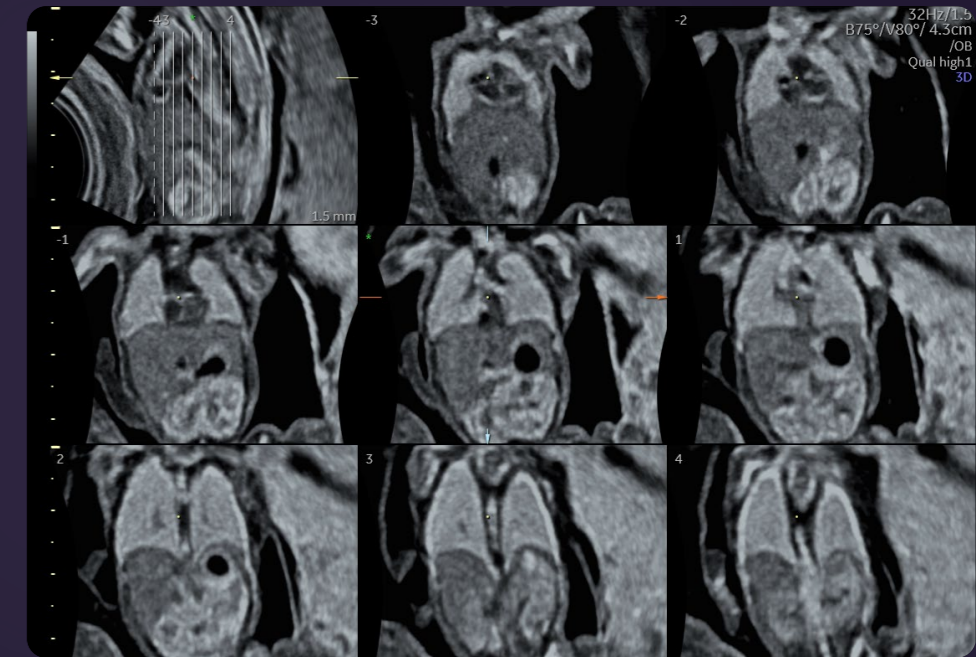
That's why we created the Voluson Expert 22 – to help you:

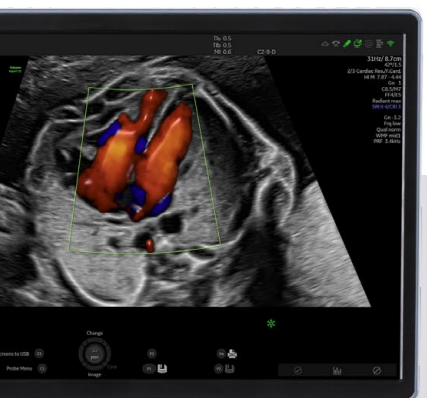
- Reveal the invisible**
- Detect the undetectable**
- Achieve the unachievable**
- Expect the unexpected**

It's a milestone in the making.
Not the end of a path, but the continuation of a journey.

Because, like you, we don't just hope for
a healthier future for women.

We insist on creating it.





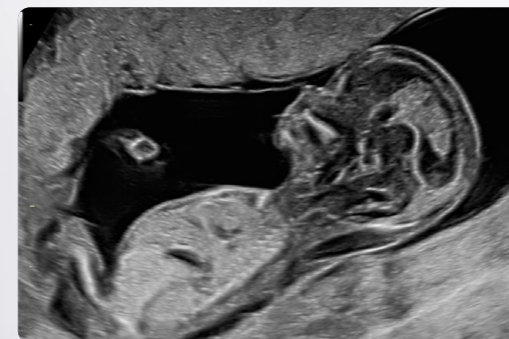
Reveal the invisible

Detailed imaging is essential and the Voluson Expert 22 is ready to show you more than you ever thought possible. We are taking innovation further, making it easier to collect more information at record speeds for even faster, sharper, and clearer imaging. The Voluson Expert 22 will help you see critical details required for a confident diagnosis.

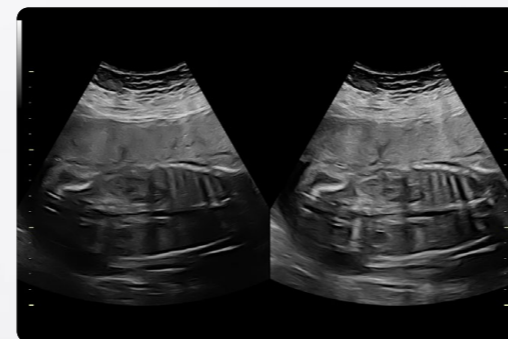
How do you find a needle in a haystack? Build a powerful engine with the most progressive and adaptive capabilities yet. The **Lyric Architecture** unlocks new imaging and processing power to achieve high resolution, detailed images – independent of body habitus and other difficult scanning conditions.

- Generates new levels of penetration, resolution, and frame rates to reveal fine anatomy in 2D/3D/4D with ease
- Delivers uniformity throughout the image with increased spatial and contrast resolution
- Works in harmony with our unique probe technology offering advanced imaging options
- Opens doors to unique Voluson imaging capabilities

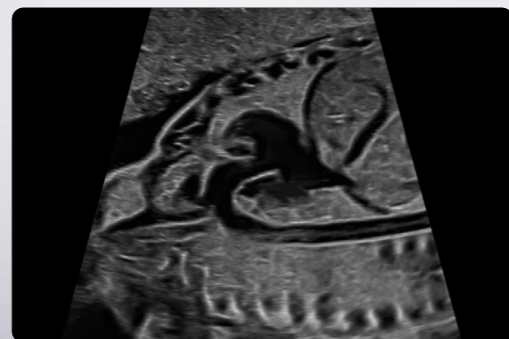
The Lyric Architecture allows you to set new standards in image quality for years to come.



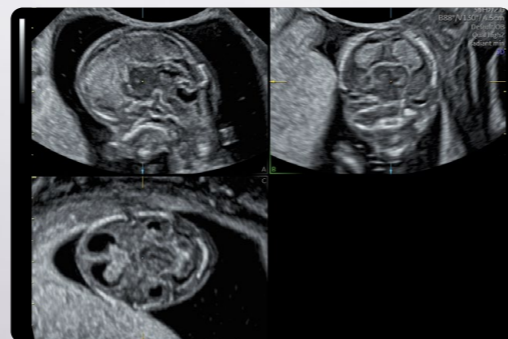
Obtain super fine details with **UltraHD** – providing increased axial and lateral resolution.



Utilize **Augment** to reduce noise and increase penetration for a robust, cleaner image even in difficult to scan situations like high BMI.

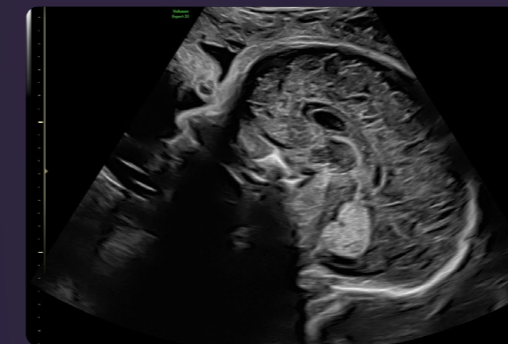


Utilize **Radiant** for greater definition and clarity. Change the levels to enhance the 3D-like elevation effect for greater border visibility and sharpness.



Radiant technology available in **multiplanar views** to improve spatial and contrast resolution for better imaging across planes.

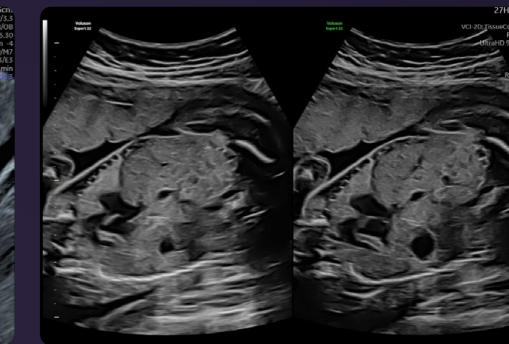
Uncover answers by elevating your 2D imaging with exceptional spatial and contrast resolution for distinct border and tissue differentiation.



Excellent detail resolution of 23-week corpus callosum with UltraHD and Radiant

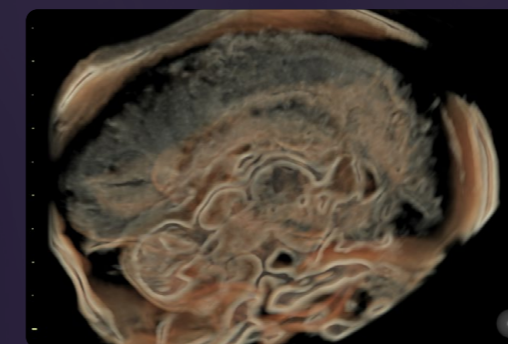


16-week fetal diaphragm

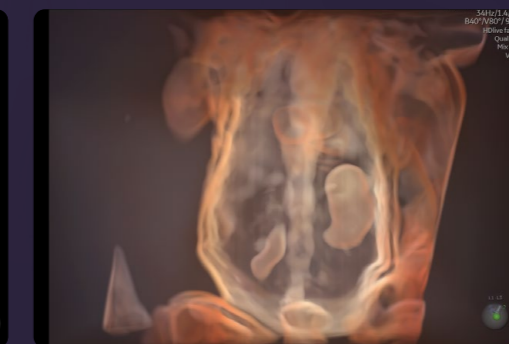


22-week fetal abdomen with eM6C probe and VCI 2D

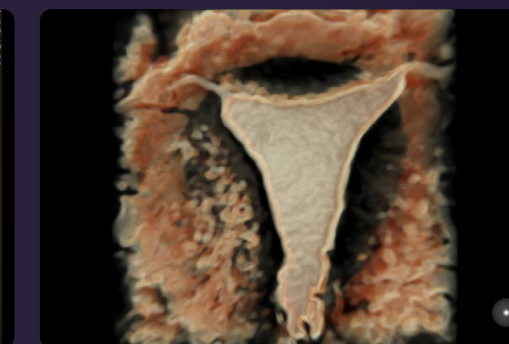
Visualizing anatomy from another view can be the difference between delaying or making a confident diagnosis. Discover the next generation of 3D/4D imaging.



23-week agenesis of corpus callosum with HD/ive™ Studio+

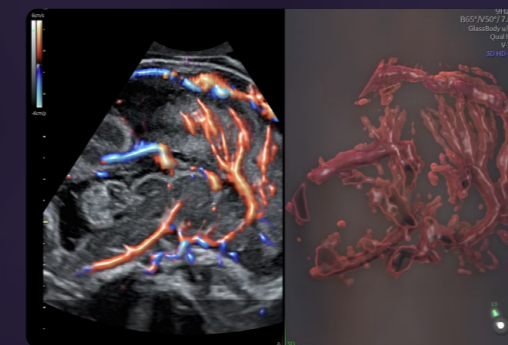


22-week fetal abdomen with HD/ive Studio+

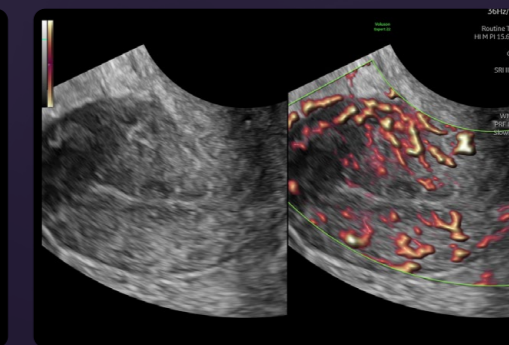


HyFoSy* highlighted with HD/ive Studio+

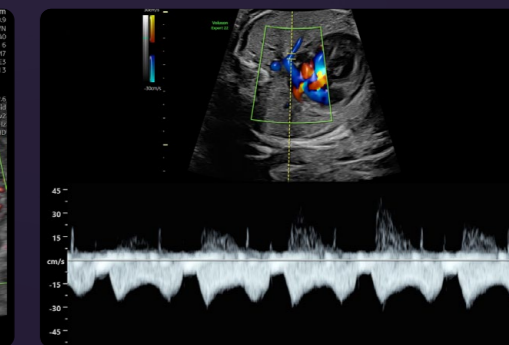
Make blood flow assessment faster and easier with advanced Voluson technologies. Increased resolution and sensitivity in color and pulsed wave Doppler for unprecedented clarity.



Agenesis of corpus callosum with HD-Flow™



Uterine vascularity with SlowflowHD



Pulsed wave Doppler of 27-week pulmonary vein

*HyFoSy not available in all regions

Detect the undetectable

Complex cases come with enough uncertainty. That is why the Voluson Expert 22 delivers extraordinary image quality and unique tools to help you focus on early detection and intervention.

Early pregnancy

Improving detection rates of chromosomal and structural anomalies in the earliest stages of development is critical for better decision making. With small anatomy, exposing anomalies requires clear, high-resolution imaging and simplified assessment tools. With features like **UltraHD**, **Radiant**, **SonoNT** and **HDlive Studio+**, you can feel confident seeing even the tiniest detail.

Fetal heart

Identifying fetal cardiac abnormalities earlier means you can intervene sooner, plan for delivery, and potentially improve outcomes. The Voluson Expert 22 provides a full suite of progressive tools to help distinguish the tiniest structures with stunning clarity to detect patient answers faster.

- Detection – Assess and uncover structural anomalies with *fetalHS* and **Radiant**
- Diagnosis – Find answers to challenging exams using **Radiantflow**,™ **eM6C eSTIC & Bi-Plane**
- Monitoring – Use *fetalHQ* to determine size, shape, and contractility

Pelvic health

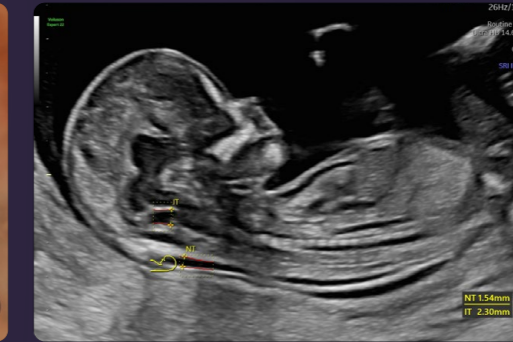
Symptoms such as pelvic pain, post-menopausal bleeding, genitourinary dysfunction, and infertility can be confusing and concerning for your patients. Exceptional imaging and advanced analysis tools like **Fibroid Mapping** and **SonoPelvicFloor^{2.0}** can provide clinical insights into gynecological health.



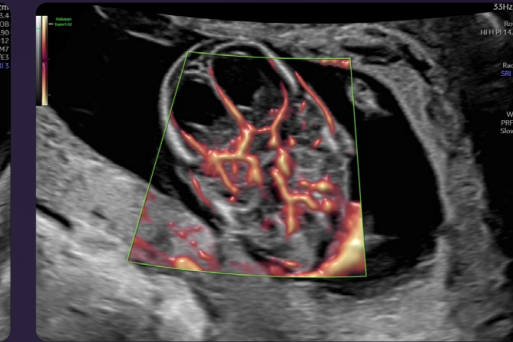
Examine developing structures earlier to uncover anomalies with high-resolution probe & imaging technologies.



HDlive Studio+ 8-week pregnancy image acquired with RIC6-12 probe

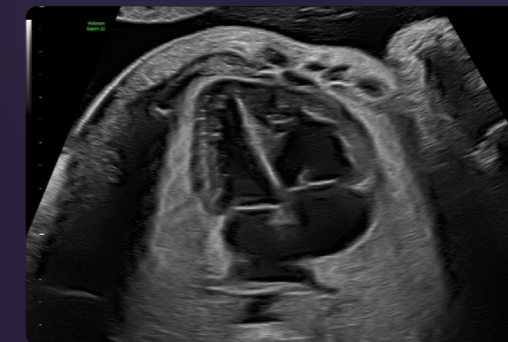


Consistently assess the nuchal and intracranial translucency with SonoNT and SonoIT automation

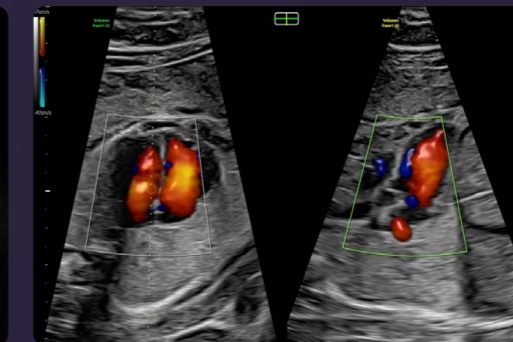


13-week fetal brain with SlowflowHD

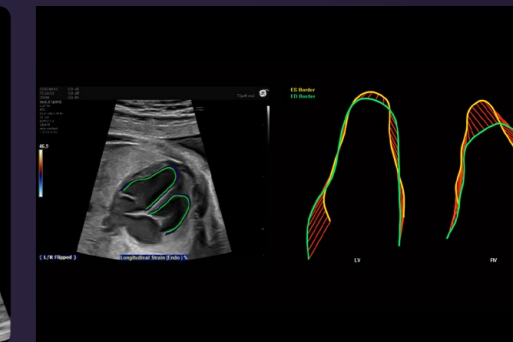
Increase detection, diagnose confidently, and effectively monitor the fetal heart.



28-week 4-chamber heart with Radiant applied for clear borders

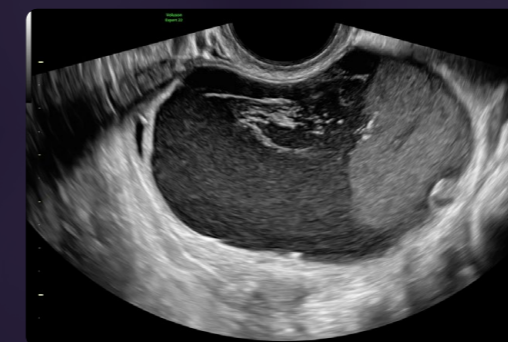


Two perpendicular views of the fetal heart displayed with Bi-Plane from eM6C probe

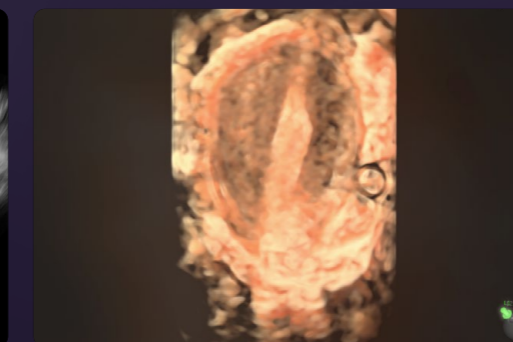


fetalHQ showing contractility of the fetal heart

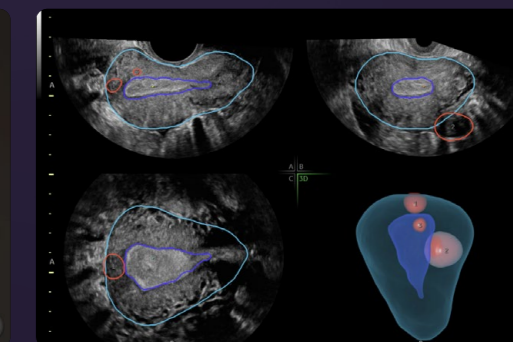
Simplify reproductive health with advanced analysis tools and easy 3D technologies.



High-definition image of ovarian mass



Unicornuate uterus rendered with HDlive Studio+



Uterine fibroid location and size highlighted with Fibroid Mapping tool

Achieve the unachievable

Modern, yet familiar, the Voluson Expert 22 is our most intuitive and customizable ultra-premium ultrasound. Designed with a new generation of Artificial Intelligence (AI) and automation tools, it helps increase exam speed and accuracy to streamline your day. Just think of the potential.



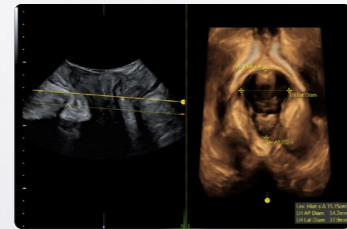
SonoLyst

Save up to 40%* on routine 2nd trimester exams with SonoLyst. It is your virtual on-board assistant utilizing the power of AI to identify fetal anatomy seen on standard views while enhancing efficiency by adding annotations and measurements.

SonoLystlive: No freezing, no annotating, no storing. SonoLystlive takes image recognition to the next level by capturing images as you scan, in real-time. Using ISUOG practice guidelines, the system recognizes the anatomy as you scan, captures the image and checks it off the list of required views significantly reducing keystrokes and exam time.

SonoLystIR: Simply scan, then freeze and SonoLystIR (Image Recognition) does the rest. Using ISUOG practice guidelines, SonoLystIR automatically detects the 21 recommended views. It identifies anatomy, then selects all applicable annotations and measurements. Confirm, and data is entered into the Scan Assistant checklist and report, enhancing workflow and reducing variability between operators for improved consistency.

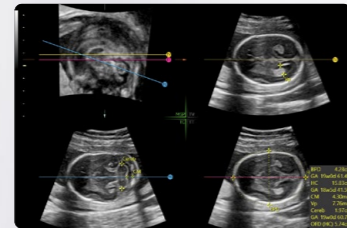
SonoLystX: Build and refine your skills with SonoLystX. Using AI, the system compares the image or view acquired to standard criteria accepted by experts to ensure it meets clinical standards. SonoLystX can help enhance accuracy and quality with anatomy diagrams plus the ability to insert image examples. Ideal for teaching and training, progress can be monitored for quality assurance to ensure the highest quality imaging standards and consistency.



SonoPelvicFloor^{2.0}

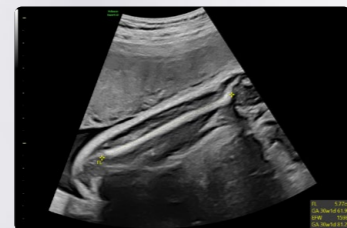
Analysis of the pelvic floor anatomy can be complicated. Through AI, SonoPelvicFloor^{2.0} simplifies the exam process by automating, plane alignment, live C-plane tracking, and measurements while offering workflow guidance to improve efficiency while eliminating uncertainty.

Utilizing SonoPelvicFloor can help reduce your pelvic floor measurement exam time by 80%.*



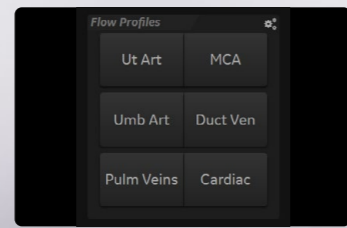
SonoCNS

AI-driven SonoCNS supports consistent measurements and helps drive workflow efficiency by helping align and display recommended views and measurements of the fetal brain from a 3D volume.



SonoBiometry

Repetitive tasks are a daily challenge especially in fetal assessment. SonoBiometry helps reduce keystrokes and improve exam time by automatic caliper placement and fetal measurements of bi-parietal diameter (BPD), head circumference (HC), abdominal circumference (AC), femur length (FL), humerus length (HL), cerebellum, cisterna magna, and lateral ventricle.**



Flow Profiles

Simplify color and pulsed wave Doppler modes with predefined and optimized preset tool, Flow Profiles. Easily move through.

*Versus manual exam time.
**As compared to manual measurements.



Modern yet familiar user interface incorporating Voluson's simple and seamless workflow.



Personalize the user interface for your unique preferences and select system colors to suit your mood with more than 4,000 color combinations.



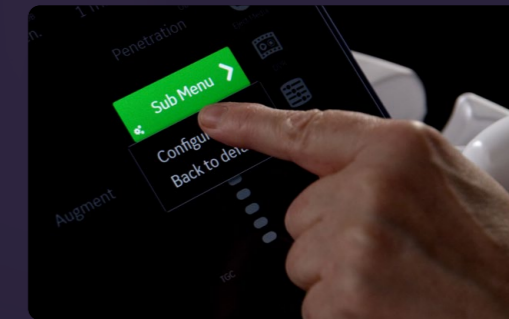
Conveniently located probe ports for easy access.



Effortlessly incorporate security into daily workflow to log on using RFID.



The 23.8" high-definition ultrasound (HDU) display offers 3 image sizes including unique full screen imaging that allows you to work comfortably and see finer details with ease.



Customizable touch panel for user individuality and productivity.



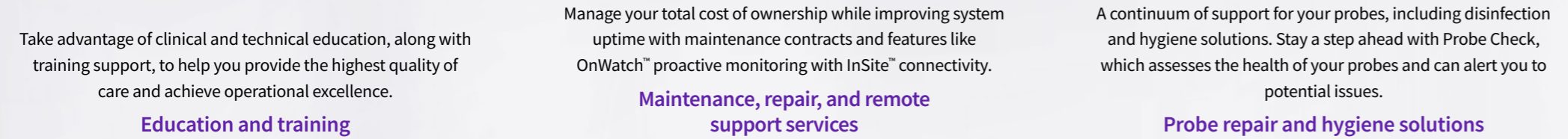
Work smarter using Respond probe activation which automatically initializes probes and presets when removed from the probe holder.



Integrated gel warmer to enhance patient experience.

Expect the unexpected

Leverage our entire ecosystem of support for peace of mind – now and in the future. Combined with a flexible service program, GE HealthCare partners with you to monitor and maintain your Voluson ultrasound systems, ensure quality and compliance, and train and inspire your staff. Experience more. More services. More support. More future-focused solutions. Finally, a partnership that won't leave you wanting more.



Updates, upgrades, and device protection

Download critical Windows® patches, security updates, and Voluson extension release software at your convenience with our eDelivery* service to reduce interruptions or delays. Protect your ultrasound system from cyber-attacks with Voluson's comprehensive SonoDefense solution including Remote Operating System (OS) updates to keep your devices secure and running smoothly.

*Not available in all countries.
**WLAN required.

Performance optimization solutions

Maximize the performance, workflow and utilization of your Voluson ultrasound system using Imaging Insights, iCenter Performance Management tools and other digital solutions.

ViewPoint™ 6

ViewPoint 6 is a dedicated ultrasound reporting and image management solution with enhanced features to help improve workflow.

Tricefy inside – Unique cloud-based solution to share, collaborate, and archive ultrasound images and reports securely with colleagues and patients directly from your Voluson.

Tricefy™



Voluson Club

Like family, we are here for you. The only ultrasound community dedicated to the education and collaboration of women's health practitioners to help expand your expertise and your practice.



Image Sharing

Easily share selected images with patients directly from your Voluson ultrasound system to their email or QR code access to patients' mobile phone through Voluson Image Portal.**





GE HealthCare

Products mentioned in the material may be subject to government regulations and may not be available in all countries. Shipment and effective sale can only occur after approval from the regulator. Please check with local GE HealthCare representative for details.

©2023 GE HealthCare.

Voluson, Radiant/low, HD/ive, HD-Flow, OnWatch, InSite and ViewPoint are trademarks of GE HealthCare. SonoLyst incorporates the AI technology of Intelligent Ultrasound. Tricefy™ is a registered trademark of Trice Imaging, Inc. Windows is a registered trademark of Microsoft Corporation. GE is a trademark of General Electric Company used under trademark license.

August 2023
JB25509XX

